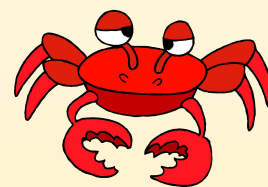


Suffield Park Nursery



Spring Term 2024

A FANTASTIC START TO THE YEAR AT SUFFIELD PARK!

We are super proud of all of our children who have managed the start of term so well. We would like to extend a very warm welcome to those families joining us for the first time, we know that this can feel like a daunting experience for parents too! Children who are new to the Nursery or have moved room this term are all settling beautifully- there have been some tears but we know that this is expected whilst they build new relationships with adults and children. As always, please do not hesitate to share any worries, no matter how small they seem, with staff- we want to do all we can to support our little ones and you.

A huge welcome also, to our lovely new team members:



Cheryl
Collings
Lagoon Room
Leader



Karen
Fowler
Lagoon
Nursery
Assistant



Sally
Cooper
Deep Blue
Sea
Nursery
Assistant



Jess Hope
Lagoon
Nursery
Assistant

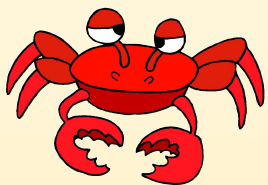
IMPORTANT

Please do make sure that you let the Office know if there's any change in emergency contact details, medical or dietary needs for your child so that our records are up to date

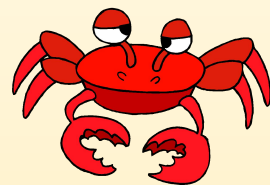


Tel: 01263 519325

Email: nursery@suffieldpark.norfolk.sch.uk

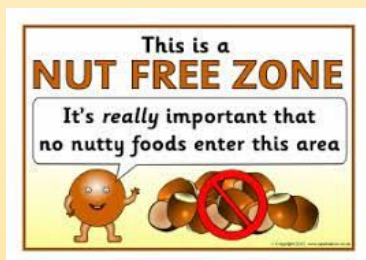


Suffield Park Nursery



REMINDERS

We are a nut-free Nursery and school. Please can you make sure that all pack lunches/tea-time snacks do not contain any nut products at all.



Please do not use your mobile phones on site at the Nursery during drop off and collections, keep them in your bags/pockets until you are off the school premises. We will ask you to leave them in the Office while visiting the rooms.



The gates to the Deep Blue Sea and Coral Reef are open from 8.45am and closed at 9am prompt each morning. The gates are checked and secured ready for the children to play outside at 9am. Please do not try to open the gates if they are closed, come round to the main doors by the Office to drop off. At the end of the day the gates are open from 3.15pm to collect children and closed by 3.35pm.

FUNDING CHANGES AND SESSIONS

Please ensure that if you qualify for the new 15 hour funding (for 2 year olds) or 30 hour extended funding (for 3-4 year olds) that you apply and/or re-confirm ready for the Summer Term, please keep checking emails from HMRC who will advise when to reapply. Codes must be eligible from 1st April 2023 to qualify for funding in the Summer Term. If you need any help please call us in the Office 01263 519325 or email nursery@suffieldpark.norfolk.sch.uk

Just a reminder that if you would like to change/add sessions during the next academic year- September 2024-July 2025 please let Angela or Hayley know as soon as possible so that we can try to accommodate the sessions that you require.

Please visit the Childcare Choices website:

<https://www.childcarechoices.gov.uk/>
for details of 2, 3 and 4 year old funding entitlement and working families entitlement for children from the age of 9 months which starts in September 24..

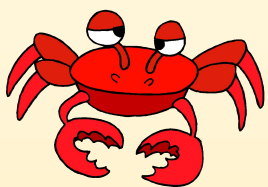


IMPORTANT- Please help us get the word out to local families about how busy our Nursery is- it is more important than ever that families book in early!

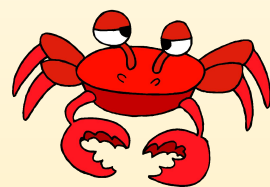


Tel: 01263 519325

Email: nursery@suffieldpark.norfolk.sch.uk



Suffield Park Nursery



SPRING WEATHER AND WOODS

A reminder to make sure we have an extra change of (named) clothes, your child wears a coat every day and bring wellies if they have them. We are incredibly lucky to have a wooded area on the school site that we hold sessions in during the week for each of our rooms. Do please make sure that especially on the days your child will be going to the woods, that they have extra changes of clothes and are wrapped up warm.

Woods Sessions

Rock Pool - Wednesday afternoon and Friday morning
Coral Reef - Tuesday morning and Wednesday afternoon
Deep Blue Sea - Thursday morning and Friday morning
Lagoon - Tuesday morning and Thursday afternoon



TAPESTRY

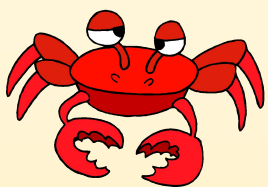
Please do remember to look at the Documents section on Tapestry- there is lots of Nursery information, for example, funding advice, hot dinner menus and SEND advice.

We will aim to get at least one post on Tapestry for you each week. Please do add photos and information about what your child has been doing at home- these are always lovely to share with the children.

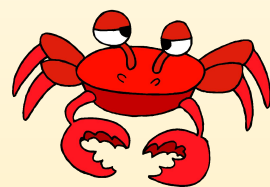


Tel: 01263 519325

Email: nursery@suffieldpark.norfolk.sch.uk

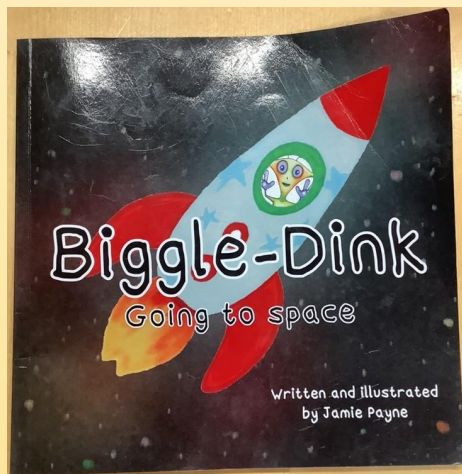


Suffield Park Nursery



World Book Day

We love to celebrate World Book Day by dressing up as our favourite book characters- staff will be joining in with this on Thursday 7th March but your child is very welcome to dress up at any time during that week (we know they don't all attend on a Thursday)! We are so lucky to have a children's author among our parents and we are looking forward to Jamie Payne visiting us to share his 'Biggle-Dink' stories with the children for World Book Day!



Look out for details of a Sponsored Readathon during the week/beginning 4th March- in past years we have managed to raise money to buy books for the Nursery and given out a prize for the child who manages to raise the most sponsorship.

F.O.S.P.I.N.S

Friends of Suffield Park Infant and Nursery School

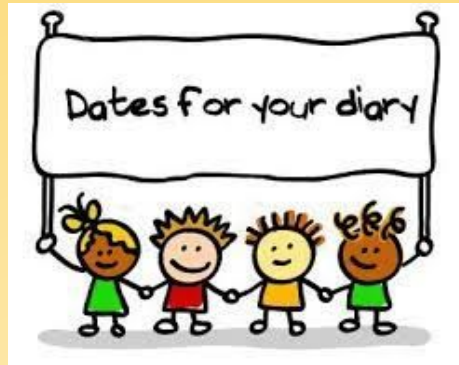
We are very lucky to have FOSPINS- this is a group of parent volunteers who get involved in raising money for the School and Nursery, for example, through cake sales and Firework Night. They are on the lookout for more members to help with the organisation and running of events- if you have any time to offer please let us know and we will pass your details on. It is a lovely way to meet other parents and help the School and Nursery at the same time. With financial pressures in the Nursery, the donations from FOSPINS are extremely welcome and appreciated.



Tel: 01263 519325

Email: nursery@suffieldpark.norfolk.sch.uk

Suffield Park Nursery



- Monday 19th February-Friday 23rd February- HALF TERM- Nursery closed to Term-time Only Children
- Week Beginning 4th March- Sponsored Readathon Week
- Thursday 7th March- World Book Day
- Friday 8th March- Photographer for Group Photos
- Week Beginning 11th March- Mother's Day Celebrations- details to follow
- Wednesday 27th March- Last day of term
- Thursday 28th March- Nursery staff celebrating our lovely Annie's Wedding Day!
- Thursday 28th March-Friday 12th April- Nursery closed to Term-time Only Children
- Monday 15th April- First day of Summer Term